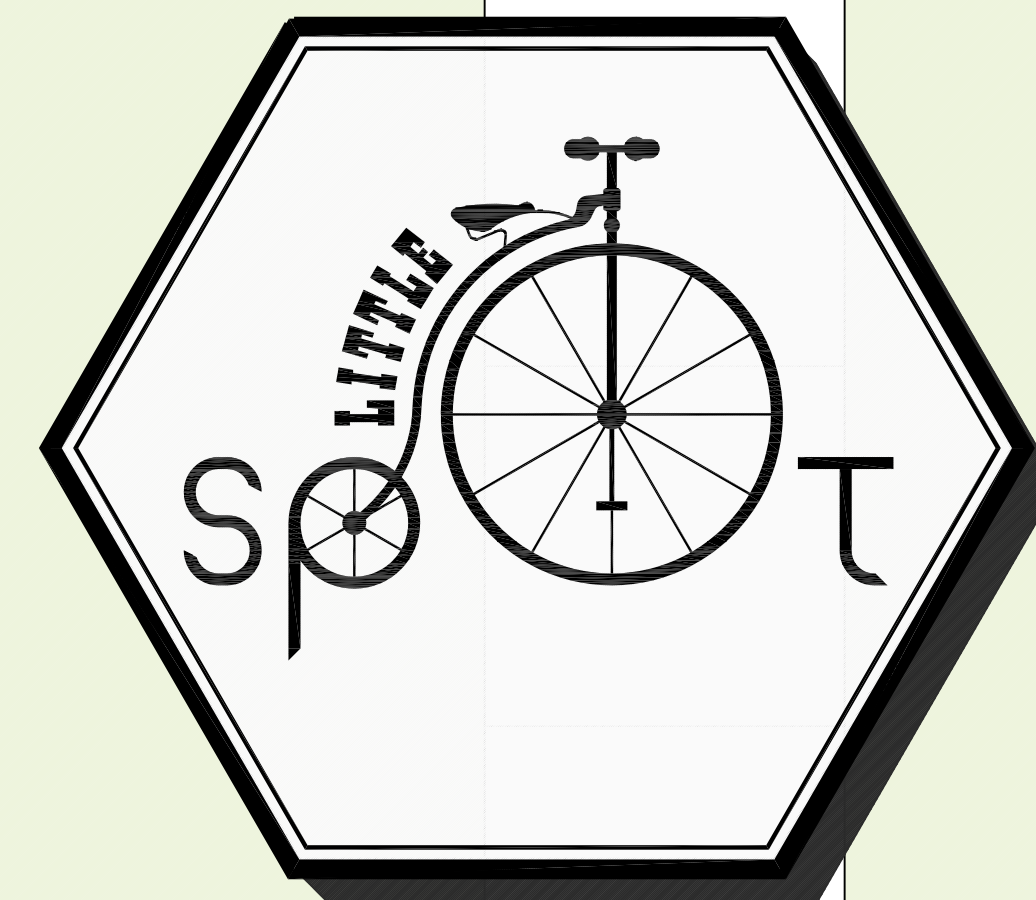
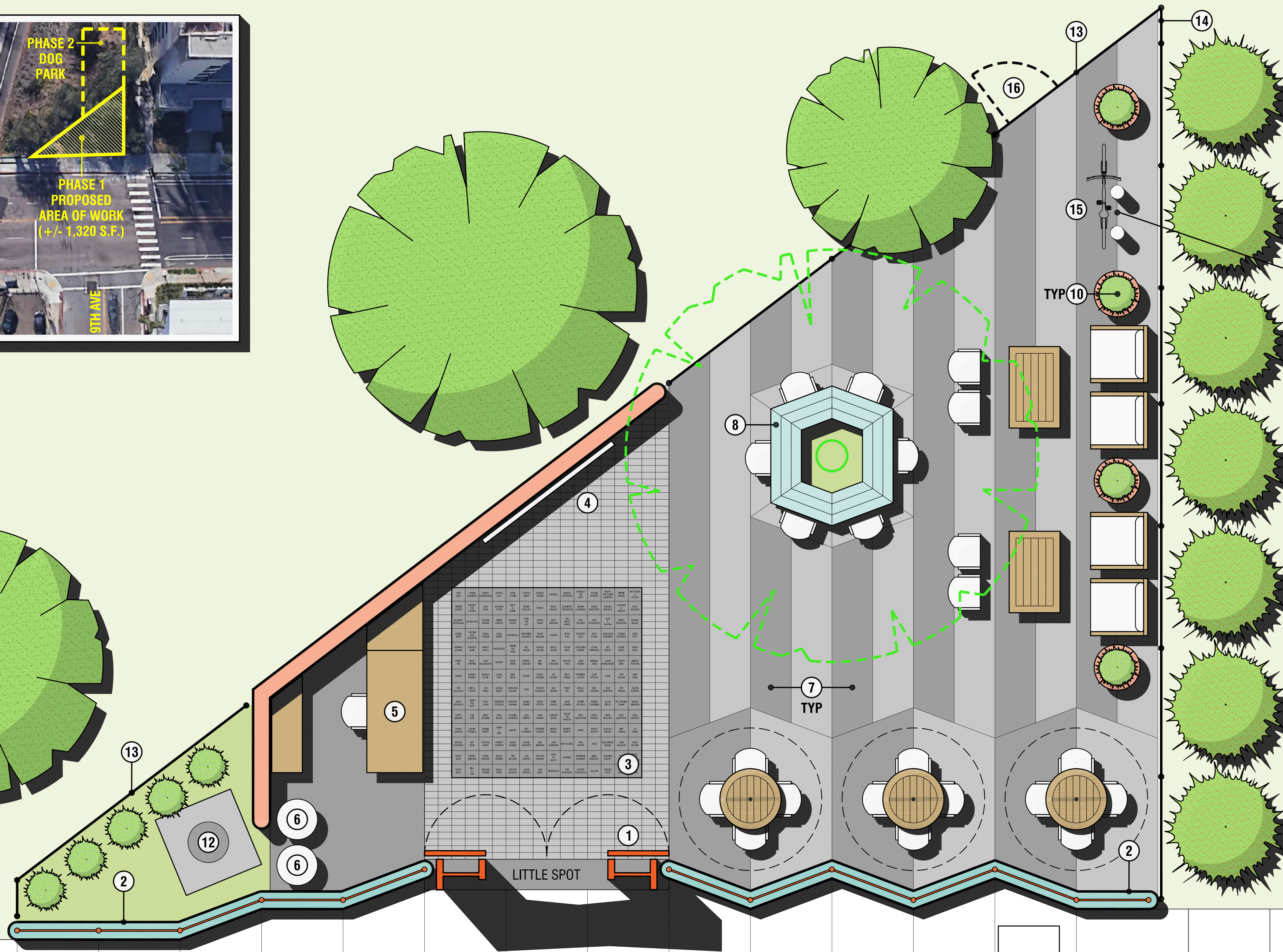


VICINITY MAP



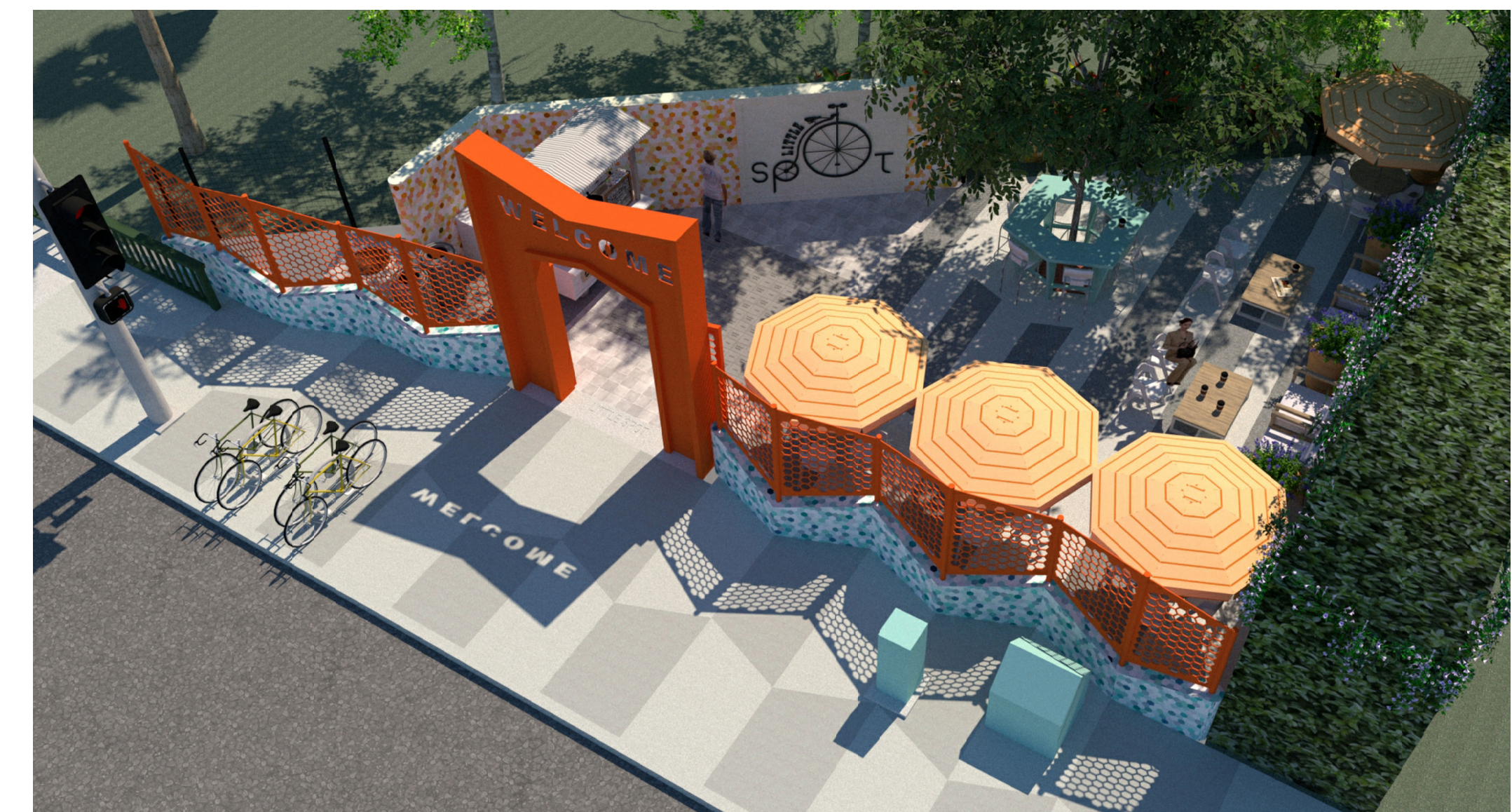
Welcome to the **Little Spot**. This pocket park project transforms an overgrown vacant lot into a vibrant community gathering space. Centrally located in the Hillcrest neighborhood, just north of downtown San Diego, the **Little Spot** is easily accessible by walking, biking, or public transportation. Along the University Avenue sidewalk, brightly painted geometric metal panels sit on top of colorful, undulating mosaic walls. Combined, these elements provide a physical and secure separation from the bustling public thoroughfare, while allowing a visual connection to the people and activities in the park. An ornamental gate defines the entry and serves as a beacon, announcing the park's presence to pedestrians and motorists alike. New bike racks, a bike fix-it station, and enhanced sidewalk paving encourage alternate means of transportation. Inside the park, visitors are greeted with an art wall and a field of concrete pavers, each one engraved with the name of a park supporter. A mobile coffee cart provides beverages, which can be enjoyed sitting at a raised table built around the existing tree, underneath an umbrella, or on a lounge chair. Movable furniture provides flexibility for various groups and activities. Existing mature trees surrounding the park provide shade and are complimented by recycled planters featuring seasonal flowers. Once established, the park can be expanded to the south to provide a much needed play area for neighborhood dogs. The **Little Spot** provides the perfect urban oasis for neighbors to relax and enjoy.

All are welcome.

- KEYNOTES**
- ① ENTRY GATE
 - ② DECORATIVE FENCE/WALL
 - ③ DONOR PAVERS
 - ④ ART WALL
 - ⑤ COFFEE CART
 - ⑥ TRASH/RECYCLING
 - ⑦ ENHANCED PAVING
 - ⑧ BUILT-IN TABLE
 - ⑨ EXISTING UTILITIES
 - ⑩ RELOCATED PLANTERS
 - ⑪ BIKE RACKS
 - ⑫ EXISTING MANHOLE
 - ⑬ SECURITY FENCE
 - ⑭ EXISTING FENCE
 - ⑮ BIKE FIX-IT STATION
 - ⑯ FUTURE DOG PARK ACCESS

UNIVERSITY AVENUE





CONCEPTUAL IMAGES

STUDIOVARONE
ARCHITECTURE